



COMMERCIAL ADVISORY

FOR LEASE

Prime Industrial Warehouse

Inglewood, CA 90301

ALEXANDER KOUSTAS | MANAGING PARTNER | AKOUSTAS@THEAGENCYRE.COM | 424.270.1651 | LIC. # 01819148

Disclaimer: This document/email has been prepared by The Agency Commercial Advisory for advertising and general information only. The Agency makes no guarantees, representations or warranties of any kind, expressed or implied, regarding the information including, but not limited to, warranties of content, accuracy and reliability. Any interested party should undertake their own inquiries as to the accuracy of the information. Terms of sale or lease and availability are subject to change or withdrawal without notice.



Versatile and efficient building affords multi-faceted capability

- Cross loading capability
- Secure truck court and parking
- Close proximity to LAX and the 405 freeway
- M1 Zoning
- Power: 4,000 Amps



LEASE RATE:

**\$1.15 PSF
NNN**

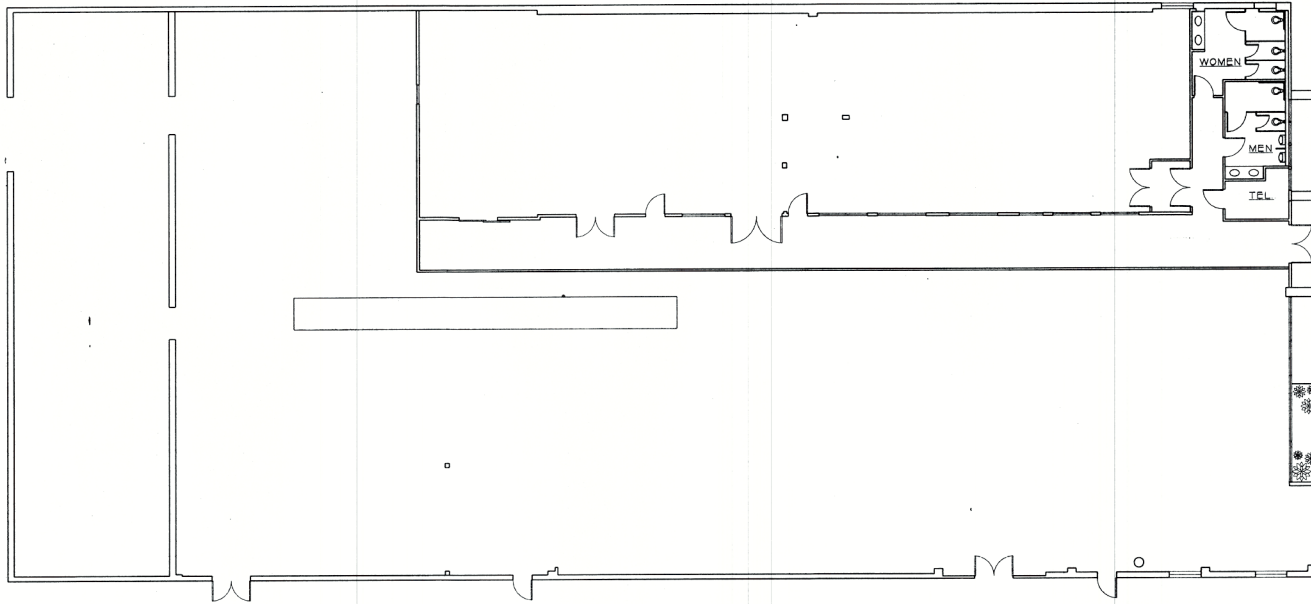
LEAST TERM:

**5-10
Years**

PARKING:

**Ample
secure area**

Floor Plan



SQUARE FOOTAGE (SF):

+/- 18,150

Offering highlights

- Expansive contiguous floor plan
- High volume area ceilings
- Multiple at grade roll-up doors





COMMERCIAL ADVISORY

ALEXANDER KOUSTAS

MANAGING PARTNER

AKOUSTAS@THEAGENCYRE.COM

424.270.1651 | LIC. # 01819148